



Treoir Tuismitheora

Parental Guidance

Ag Coinneáil Coláiste Feirste Sábháilte

Keeping Coláiste Feirste Safe

Sláinte Health



Má tá aon siomptóm ag dalta, ná cur ar scoil iad. Tá sláinte mheabhrach an scoilphobal thar a bheith tábhachtach. Coinnigh teagmháil leis an mhúinteoir foirme faoin tsláinte.

If a pupil has any symptoms, do not send them to school. The mental health of the school community is vitally important, keep the form tutor informed of all health matters.

Sláinteachas Hygiene



Nigh lámha, trealamh, culaith scoile agus málaí scoile go rialta.

Wash hands, equipment, uniforms, and school bags regularly.

Taisteal Transport



Ba cheart do thuismitheoirí daltaí a fhágáil agus a bhailiú ag An Spórtlann.

Parents must drop-off and pick up pupils at An Spórtlann.

Lón agus Sos Break and Lunch



Ba chóir uisce agus sos/lón a ghlacadh isteach (gan cnónna). Beidh lón ar fáil fríd an bhialann (biachlár laghdaithe).

Water and lunch/break (without nuts) should be brought in. Lunch will be provided through an Bialann (limited menu).

Teacht chun na Scoile Arrival to School



Ní chóir go mbeadh daltaí i bhfoirgneamh na scoile roimh 8.45am. Téann daltaí fríd doirse sainaithe don Eochairchéim

Pupils should not be in the school building before 8.45am. Pupil will enter via designated doors assigned to their Key Stage.

Cumarsáid Communication

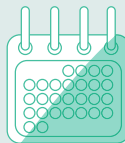


Beidh teagmháil déanta fríd aip na scoile (níos mó eolais le teacht), FB, suíomh na scoile agus téacs.

Communication will be made through the school app (more information will follow), school website, FB and txt.

www.colaistefeirste.org

Coinní Appointments



Tá sé riachtanach d'achan duine coinne a dhéanamh roimh theacht chun na scoile.

It is compulsory for all visitors to make an appointment before arriving at Coláiste Feirste.

Neamhláithreachas Absence



Má tá do pháiste as láthair, gabh i dteagmháil leis an mhúinteoir foirme (guthán nó ríomhphost).

If your child is absent, contact the form tutor via telephone or email.

Clúdach Aghaidhe Face Coverings



Tá clúdach aghaidhe riachtanach do/**Face Coverings are mandatory for:**

- Cuairteoirí i gcónaí/*Visitors at all times.*
- Baill foirne sna dorchaí agus nuair nach féidir cloí le 2m /*Staff in corridors and when 2m can not be adhered to.*

Moltar iad do/They are recommended for:

- Daltaí (sna dorchaí agus áiteanna sóisialta)/*Pupils (in corridors and communal areas).*

Beidh 2m idir dhaltaí agus baill foirne, i gcónaí. Cuirfear béim ar 1m idir dhaltaí.

There will be 2m between teachers and pupils, always. We will encourage pupils to stay 1m apart.

Covid sa Bhaile Covid at Home



Má tá duine ar bith sa bhaile le siomptóm, ba chóir fanacht sa bhaile agus treoir a fháil ón PHA agus an scoil a choinneáil uasdátaithe.

If anyone at home has symptoms you should stay at home, get advice from the PHA and keep the school informed.

Ná bíodh leisc ort teagmháil a dhéanamh le múinteoir foirme do pháiste má tá aon bhuaireamh agat.

Please do not hesitate to contact your child's form tutor regarding any concerns.